

Rejuvenate Squires and Edward Cludd Ponds

Bring people together and educate, by improving our wetland habitats

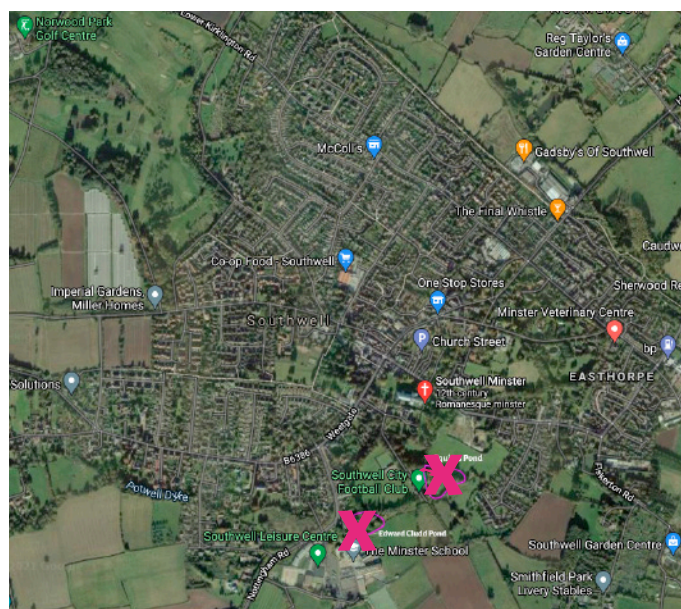
Squires Pond and Edward Cludd Ponds

This beautiful watercourse begins at a natural spring known as Edward Cludd Pond, you then follow the Potwell Dyke and branch off to another pond and wooded wet area, enhanced by Mr Doug Squires (founder of A & V Squires Plant Limited) on the edge of Minster Fields around 1975, in sight of the historic Minster. Together they total half a hectare.

These sites next to the Minster School, walking distance to Lowes Wong and Holy Trinity Infant School, see many young adults stop after school, to socialise and exercise before going home. It is adjacent to a well used children's play area, a Scout Hut and extensive fields used by teenagers, young adults and adults. It's also close to a large free parking area.

What could be achieved:

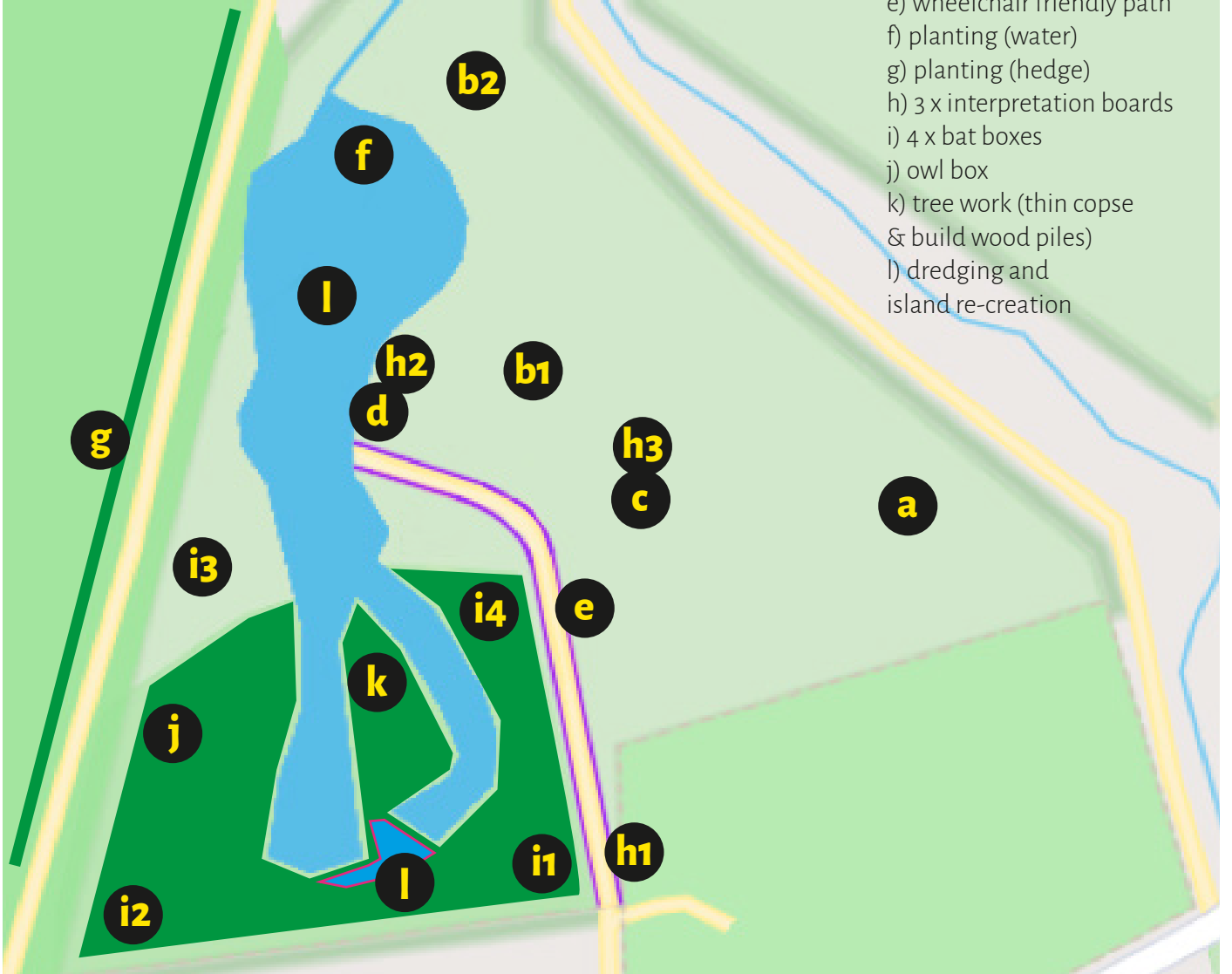
- Biodiversity enhancement (species, habitats, and ecosystems), with a species rich wetland.
- Movement and feeding corridors for wildlife along the Potwell Dyke.
- Specific character reflected by the natural springs as the foundation of Southwell, in a child friendly educational way.
- Opportunities for physical activity, social interaction and education.
- Capture and manage water creatively.
- Improve a wetland habitat providing residents and visitors with opportunities to interact with nature.
- Allow people to connect with water and wildlife.
- Provide nature surveillance opportunities.
- Improve accessible of public paths from open spaces to this wildlife location.



Rejuvenate Squires Pond

Item location map

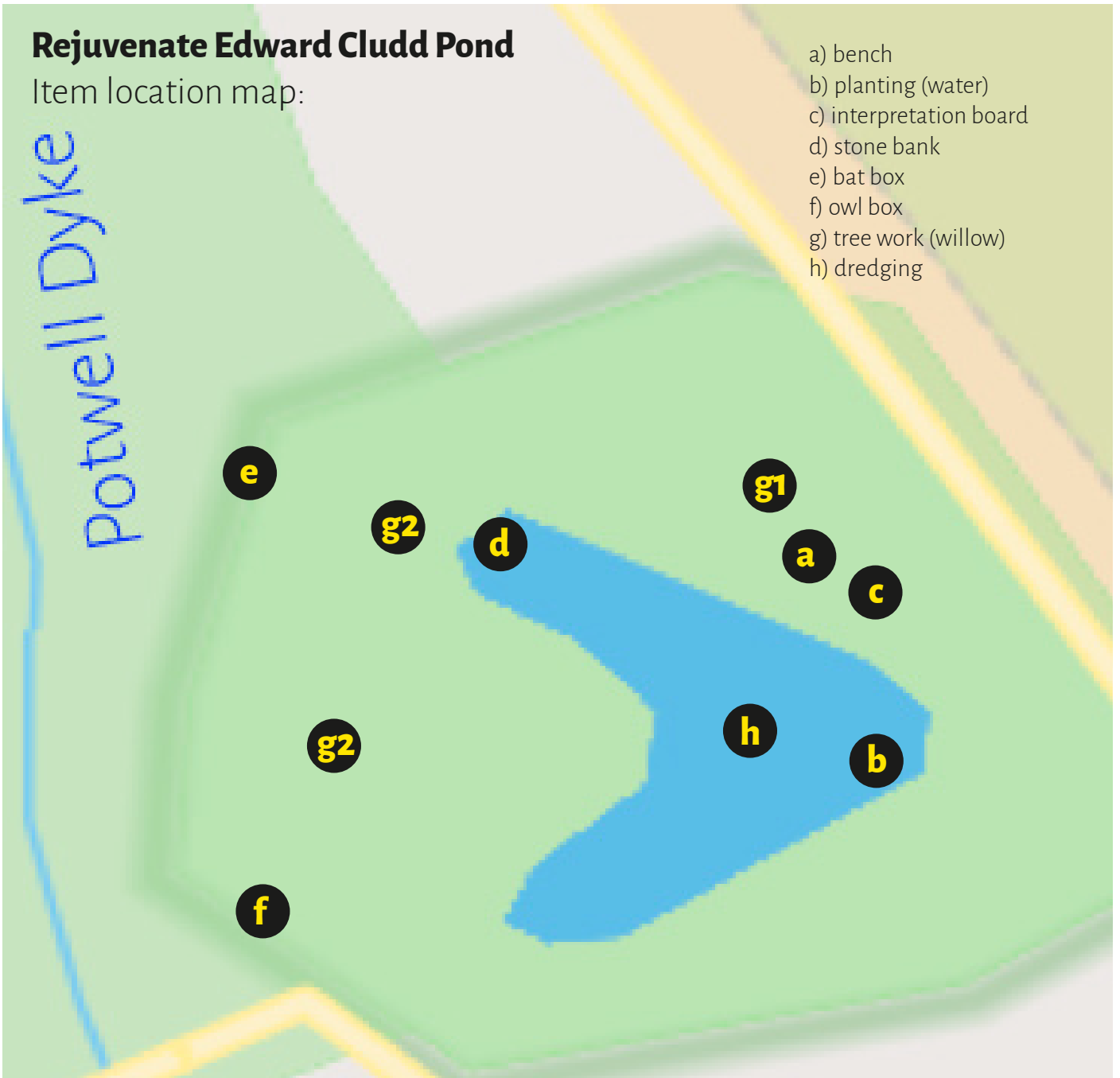
- a) picnic table
- b) 2 x bench
- c) bugzone pond
- d) dipping pond platform
- e) wheelchair friendly path
- f) planting (water)
- g) planting (hedge)
- h) 3 x interpretation boards
- i) 4 x bat boxes
- j) owl box
- k) tree work (thin copse & build wood piles)
- l) dredging and island re-creation



Rejuvenate Edward Cludd Pond

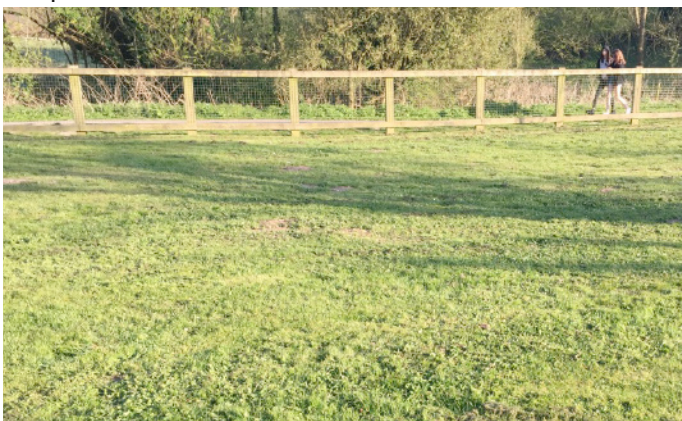
Item location map:

- a) bench
- b) planting (water)
- c) interpretation board
- d) stone bank
- e) bat box
- f) owl box
- g) tree work (willow)
- h) dredging



Rejuvenate Squires Pond: location pictures

a) picnic table



b) bench 1



b) bench 2



c) bugzone & interpretation 3



d) dipping pond platform & Interpretation board 2



e) wheelchair friendly path &



f) planting (water)



g) planting (70m hedge)



Rejuvenate Edward Cludd Pond:

a) picnic bench



b) planting (water)



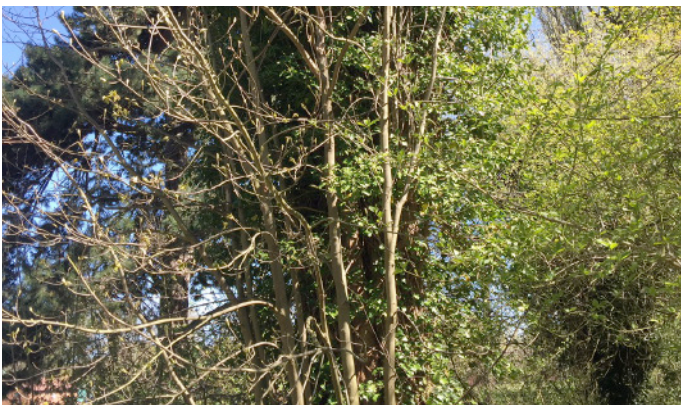
c) interpretation board



d) stone bank



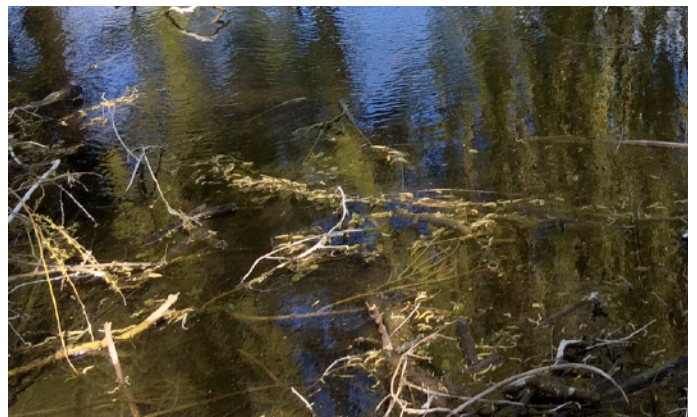
e) owl box



f) bat box



h) dredging



PLANTING

Squires Pond

Plants to go in the deepest water, oxygenators:

Spiked Water Milfoil *Myriophyllum spicatum*

Hornwort *Ceratophyllum demersum*

Floating-leaved plants:

Amphibious bistort *Polygonum amphibium*

Fringed water lily *Nymphoides peltata*

Strappy-leaved emergent plants:

Flowering rush *Butomus umbellatus*

Branched burr reed *Sparganium erectum*

Common Water-plantain *Alisma plantago-aquatica*

Yellow Iris *pseudacorus*

Marginal plants, to be planted in shallow water & along water's edge:

Water mint (*Mentha aquatica*)

Water forget-me-not (*Myosotis scorpiodes*)

Marsh marigold (*Caltha palustris*)

Water avens (*Geum rivale*)

The Old Ragged School

Bankside plants, tall plants to be planted on pond bank:

Meadowsweet *Filipendula ulmaria*

Yellow loosestrife *Lysimachia vulgaris*

Low growing / creeping for pond bank

Creeping Jenny *Lysimachia nummularia*

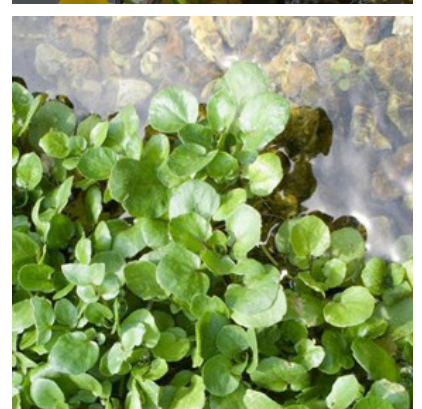
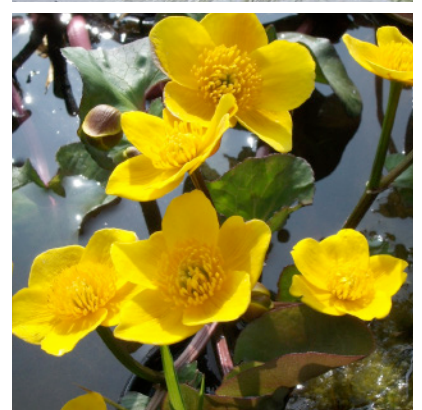
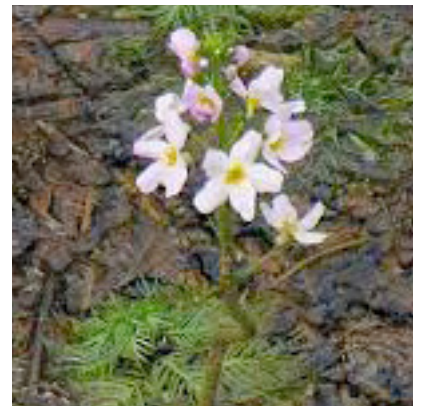
Ragged Robin *Lychnis flos-cuculi*

Foraging plants:

Wild garlic

Borage

Watercress



Edward Cludd Pond

Emergent layer:

Marsh marigold

Yellow iris *pseudacorus*

Common reed:

Phragmites australis, stabilises pond margins

Submerged planting:

Hornwort

Foraging plants:

Wild garlic

Borage

Watercress